

WELCOME TO BANKVIEW



CONDO | 1,435 sq ft | 2 BEDROOMS | 3.5 BATHROOMS



1812 14A Street SW

Have you realized that working from home is easier and cheaper than Paying rent for your office space. You probably also realized that you don't have enough space to do this long term. Here is the solution! Located in Bankview just steps from 17th Ave , this 1800 + sqft townhouse condo is amazing and can fill all your needs. Very few spaces are zoned C-COR1 Residential and Commercial at the same time. Picture this. Live up stairs on the 3 floors of Contemporary designed living space including. Hardwood floors Big Kitchen, Gas fireplace, windows everywhere. A Master Bedroom that occupies the whole top floor with 5 piece ensuite. You still have the completely developed lower floor , with big windows half bath, and direct access from the front door for your office. If your professional needs are bigger, than design any portion of the 4 floors as needed. You also have a private professionally designed back yard and patio area. Parking is not a problem. Garage space, outside stall, and street parking with permits for up to 4 more spaces. This unique space makes living and working in one location possible. **MLS® #A1083827**

JANIS & JASON RISI

Broker

REALTOR®

STONEMERE REAL ESTATE SOLUTIONS

#302 4014 Macleod Trail South

Janis cell: 403.993.7050 | Jason cell: 587.893.1918

Janis email: jrisi@stonemere.ca

Jason email: jasonrisi@stonemere.ca



StoneMere
Real Estate Solutions



1812 14A Street SW

Row/Townhouse

Possession: **Negotiable**

Neighbourhood: **Bankview**

Built in: **2007**

Exterior Finish: **Stucco**

Foundation: **Concrete**

Parking: **Attached Garage**

Main Level

Kitchen: 14'7" x 8'10"

Entrance: 7'6" x 8'0"

Living Room: 14'8" x 17'7"

Second Level

Bonus Room: 14'8" x 11'3"

Third Level

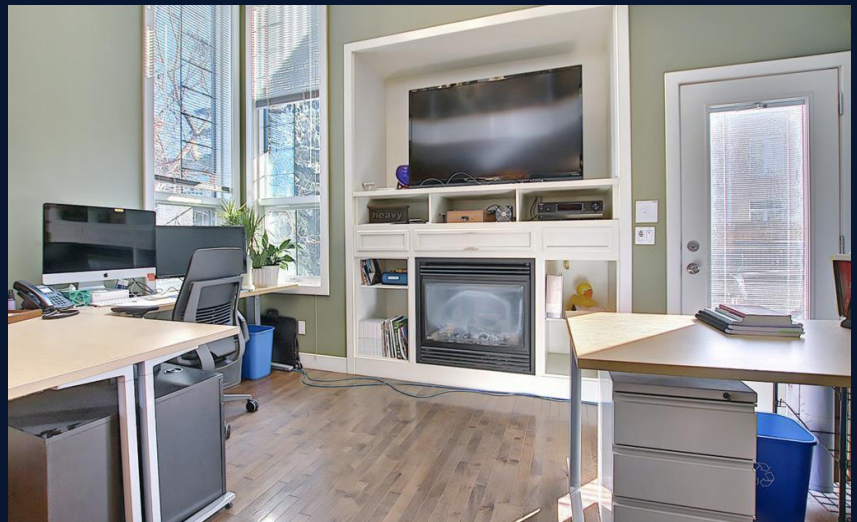
Primary Bedroom: 17'8" x 15'0"

Lower Level

Game Room: 17'2" x 14'2"

Appliances Included: Refrigerator, Dishwasher, Stove, Microwave Range Hood Combo, Window Coverings, Garage door opener

Maintenance Fee Includes: Insurance, Property Management, Reserve Fund Contributions



StoneMere
Real Estate Solutions
www.stonemere.ca

**For more info, please contact
Jason Risi's Cell: 587.893.1918
Janis Risi's Cell: 403.993.7050**

